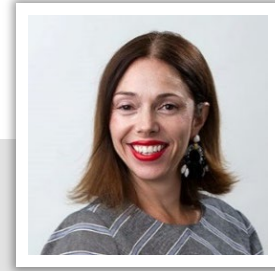


Sarah W. Williams

Of Counsel

Education: Trinity University, B.A.
University of Texas at Austin, M.P.Aff.
Residence: Austin, Texas



Experience

Sarah joined Marts&Lundy in 2002 as an analyst in our Analytical Solutions Group and served as the leader of Analytical Solutions for two decades. She works with consultants and clients on data mining and analysis projects, constituent surveys and custom benchmarking projects of all sizes. Sarah's extensive experience in research and analysis, and nonprofit program development and management, puts her in the perfect position to work with our clients and her colleagues in continuously refining our philanthropic Capacity Analysis reports as well as developing new data-mining tools.

Her previous experience includes work as a strategic communications and research consultant with Shipley & Associates, Inc. She also served as a special projects consultant with the Lance Armstrong Foundation. Sarah has been an AmeriCorps volunteer and a reporter/researcher for the Congressional Quarterly. In addition, she has completed language training at the Centro Linguistico Conversa, Intensive Spanish Institute, San Jose, Costa Rica.

Sarah was a member of the Marts&Lundy Board of Directors from 2009-2012 and was a member of the Executive Committee from 2013 to 2023. Sarah is a Fundraising Operations Task Force Member and Adjunct Instructor at Rice University's Center for Philanthropy and Nonprofit Leadership. In addition she is on the board of the Giving USA Foundation.